



Listings Officer
ASX Melbourne
ASX Announcement by Electronic Lodgement, 1st May, 2012

KARINGA CREEK POTASH MAIDEN RESOURCE ESTIMATE

The Joint Venture partners Rum Jungle Resources Ltd (71%) and Reward Minerals Ltd (29%) are pleased to announce a maiden resource estimate for the Karinga Creek Potash Project which has been reported by Geos Mining Minerals Consultants using data from 55 Sonic drill holes, 8 Vibracore drill holes and 73 brine samples from 23 salt lakes in the project area.

The resource has been estimated for the potassium dissolved in brines contained in the drilled sediments, as exploitation is envisaged by pumping the brines out, with mineral products being recovered by processes including evaporation, heating/cooling and chemical reaction.

	K₂SO₄ (tonnes)	(kg /m³ brine)	Number of Lakes
Inferred	52,000	3.90	9
Indicated	477,000	4.23	7
Total	530,000		

Table 1. Karinga Creek Potash Resource Estimate

NB – the terms inferred and indicated are defined in the JORC code, to represent relative geological uncertainty, although the JORC code was not designed for use in connection with minerals which are dissolved in brines. It is generally accepted that geological uncertainties are greater when dealing with the estimation of brine resources.

The estimated resource is contained in 30M tonnes of brine in 16 salt lakes.

This brine tonnage represents the in situ brine, with no recovery factor applied. It will not be possible to extract all of the contained brine by pumping or trenching; the amount which can be extracted depends on many factors including the clay content and permeability of the sediments.

Schoenite is a mixed potassium magnesium mineral, with a formula of $K_2Mg(SO_4)_2 \cdot 6(H_2O)$, which is likely to be an intermediate product from this brine, which then requires treatment to extract the potassium sulphate (K_2SO_4 , which is a saleable product). **The Schoenite resource totals 1.2Mt.** The magnesium to potash ratio of the brine is approximately **1.5:1**.

To date there has been no test-work on the commercial processing of these brines. Extraction of the potash from these brines is expected to be technically feasible but recovery and economics will depend on many factors, including brine chemistry. Halite and/or thenardite could potentially be produced as by-products.

The resource was estimated using a cut-off grade of $3kg/m^3$ of potassium. The cutoff was applied on a lake by lake basis. The resource was estimated using the inverse distance squared method. Another seven lakes were drilled but either lack sufficient data or had results which averaged below the potassium cut-off grade



Rum Jungle Resources Ltd
ABN 33 122 131 622
20/90 Frances Bay Drive
Stuart Park NT 0820
GPO Box 775
Darwin NT 0801

Tel: (08) 8942 0385
Fax: (08) 8942 0318

The resource has been estimated using an average maximum depth of 3.2 m which was the average depth of the 55 sonic drill holes. Vibracore drill holes and brine samples generally sampled the top metre of lake sediment only. This resource figure is based on the in situ brine resource within the lake sediments of each lake and does not take into account any additional brine resource from outside recharge.

Whilst the Joint Venture is pleased to announce a maiden resource, work programs for the year starting in May are expected to significantly increase the size and confidence of the Schoenite brine resource. An archaeological survey was completed last week prior to construction of new access tracks within the project area. These new tracks have been approved by the Department of Resources. A follow up fauna and flora survey will commence on May 14.

It should be noted from previous announcements that many drill holes ended in high grade brine in a fractured siltstone aquifer beneath the salt lakes. Planning has now been completed with a drilling contractor and hydrogeologist engaged to commence an Air Core drilling program with holes planned to a minimum depth of 12 m. Approximately half of these drill holes will be cased with 100 mm PVC to allow pump testing to determine recharge, transmissivity and specific yields with the fractured siltstone aquifer in the Horseshoe Bend Shale beneath the salt lakes. All drill holes will be sampled at 3m intervals to determine the geochemistry of the brine. This drill program will allow an upgraded resource estimate to be released later in the year.

Four trenches up to 100 m long have also been planned. Pump testing from these trenches over 5 days will allow estimates to be made of recharge, transmissivity and specific yields of the shallow lake sediments.

The project is ideally located close to the Lasseter Highway and also close to a rail siding at Kulgera. The joint venture believes it is too early to make statements about possible production rates or economics of the project at this stage and will wait until a resource upgrade has been announced later in the year and pump testing of bore holes and trenches has been completed.

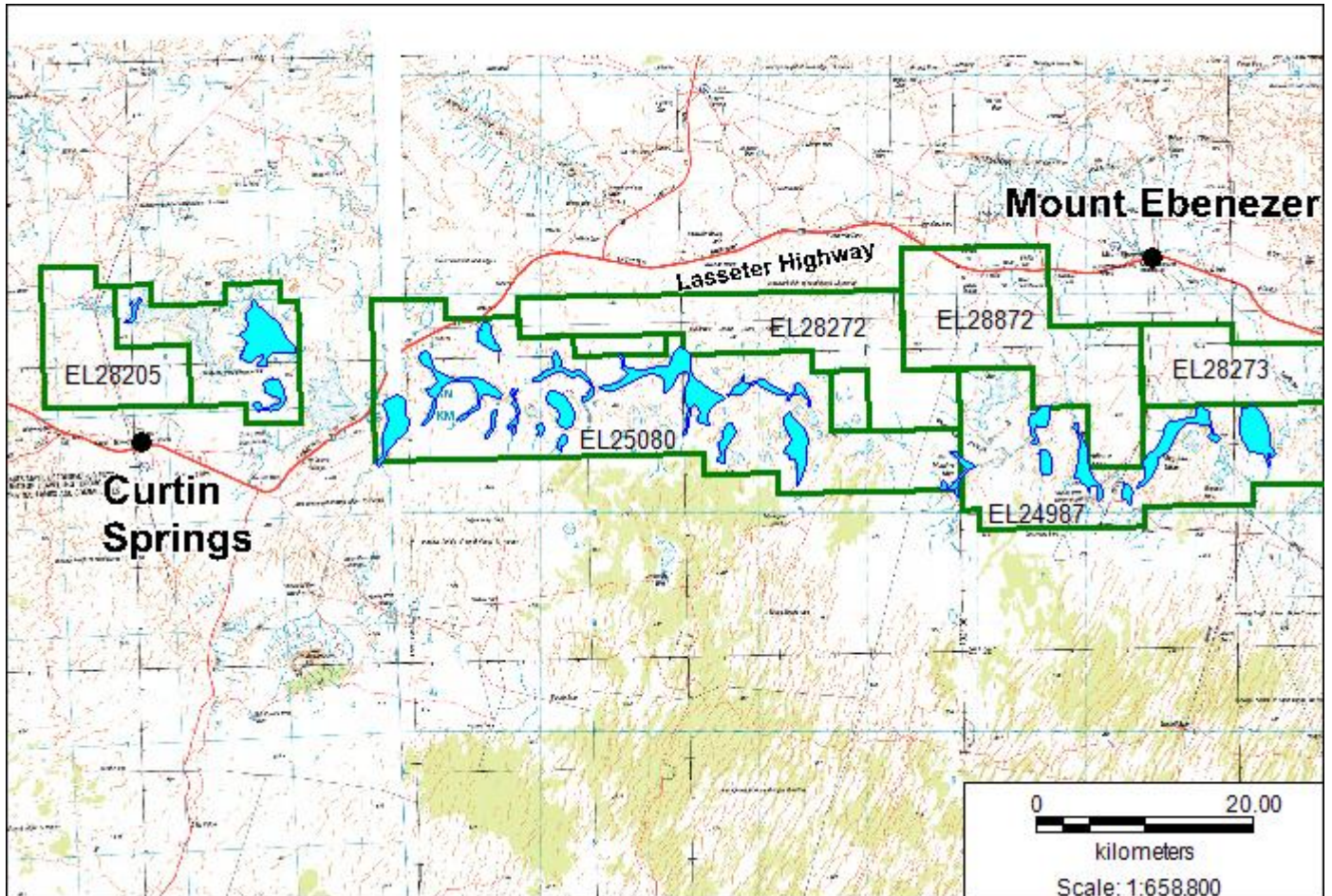


Figure 1. Location map of salt lakes within the Karinga Creek Potash Project



Rum Jungle Resources Ltd
ABN 33 122 131 622
20/90 Frances Bay Drive
Stuart Park NT 0820
GPO Box 775
Darwin NT 0801

Tel: (08) 8942 0385
Fax: (08) 8942 0318

DW Muller MSc, MBA, FAusIMM
Managing Director

The information in this report that relates to the potash resources have been verified by Sue Border from Geos Mining Mineral Consultants who is a Fellow of both the AusIMM and the AIG and is a Competent Person as defined in the 2004 edition of the "Australasian Code for Reporting of Exploration Results, Mineral Resources and Ore Reserves".

Sue Border has sufficient experience which is relevant to the style of mineralisation and type of deposit under consideration and to the activity which she is undertaking to qualify as a Competent Person as defined in the 2004 edition of the "Australasian Code for Reporting of Exploration Results, Mineral Resources and Ore Reserves".

Sue Border consents to the inclusion in this report on the matters based on his information in the form and context in which it appears.

This release may contain forward-looking statements. These forward-looking statements are not historical facts. Rather, these forward-looking statements are based on the current beliefs, interpretations, assumptions, expectations, estimates, and projections. Actual results could differ materially from a conclusion, forecast or projection in the forward-looking information.